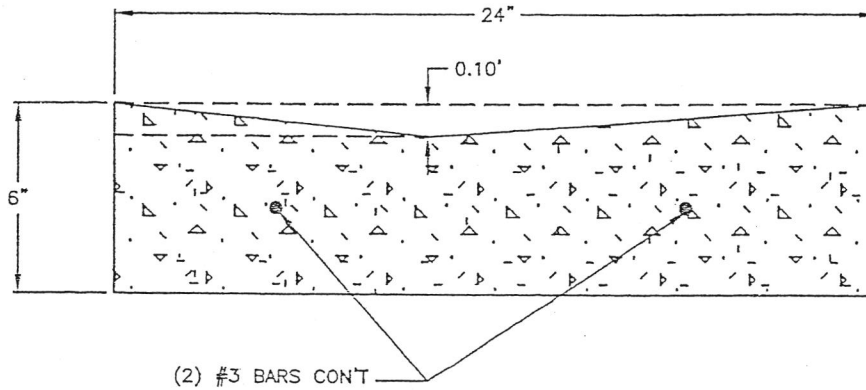


PAVEMENT REPAIR DETAIL

NOT TO SCALE

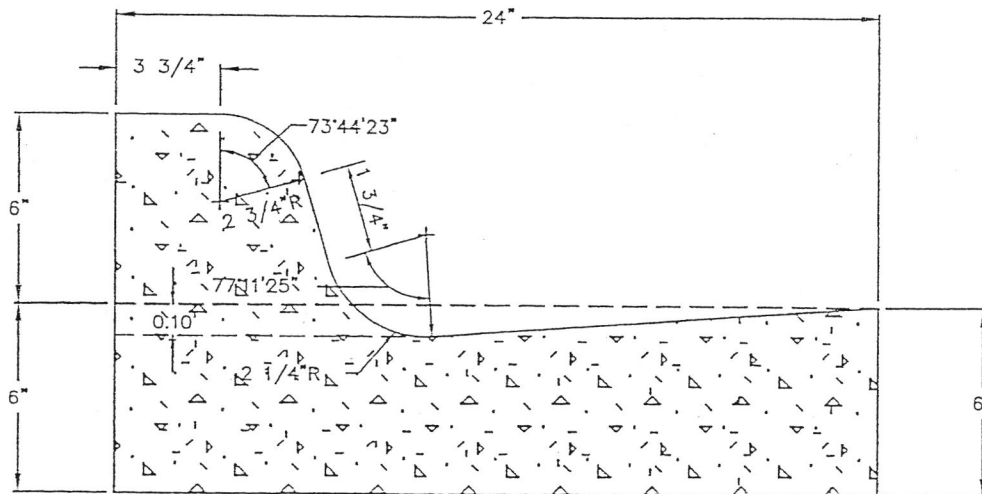


NOTES:

1. AN EXPANSION JOINT IS REQUIRED FOR EVERY 40' OF LAY DOWN OR CURB GUTTER TYPICAL.
2. CONTROL JOINTS REQUIRED FOR EVERY 10' OF LAY DOWN OR CURB GUTTER.

TYPICAL LAY DOWN DETAIL

NOT TO SCALE



NOTES:

1. AN EXPANSION JOINT IS REQUIRED FOR EVERY 40' OF LAY DOWN OR CURB GUTTER TYPICAL.
2. CONTROL JOINTS REQUIRED FOR EVERY 10' OF LAY DOWN OR CURB GUTTER.

TYPICAL 24" CURB & GUTTER

NOT TO SCALE